

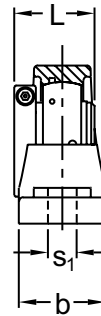
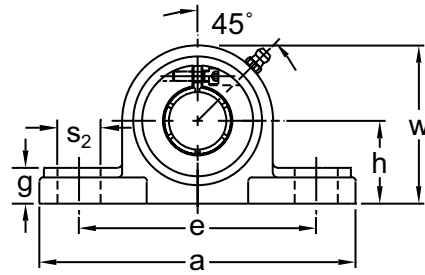


# ACCU-LOC LOW BASE PILLOW BLOCKS

UELP 200

NORMAL DUTY

Concentric Locking  
52100 Bearing Steel  
w/Black Oxide Finish  
Cast Iron Housing  
Low Shaft Height  
Insert detail-pg.120  
Inch and Metric



Shaft Diam. (in.)	AMI Unit #	List Price	Dimensions (in.)										Bolt Size (in.)	Bearing #	Housing #	Weight (lb.)	
			h	a	e		b	s <sub>1</sub>	s <sub>2</sub>	g	w	L					
					Min.	Max.											
3/4	UELP204-12	73.00	1-1/4	5-1/4	3-1/2	4-1/4	1-1/4	1/2	3/4	1/2	2-9/16	1.299	3/8	UE204-12	LP204	1.64	
7/8	UELP205-14	76.10	1-5/16	5-1/2	3-3/4	4-1/2	1-1/2	1/2	3/4	5/8	2-11/16	1.394	3/8	UE205-14	LP205	1.96	
15/16	UELP205-15													UE205-15			
1	UELP205-16													UE205-16			
1-1/8	UELP206-18	99.80	1-9/16	6-1/2	4-1/2	5-1/4	1-5/8	19/32	7/8	11/16	3-3/16	1.567	1/2	UE206-18	LP206	2.86	
1-3/16	UELP206-19													UE206-19			
1-1/4	UELP206-20													UE206-20			
1-1/4	UELP207-20	130.10	1-13/16	7	5	5-3/4	1-7/8	19/32	7/8	3/4	3-11/16	1.728	1/2	UE207-20	LP207	4.52	
1-3/8	UELP207-22													UE207-22			
1-7/16	UELP207-23													UE207-23			
1-1/2	UELP208-24	135.90	1-15/16	7-1/4	5-1/4	6	2	19/32	7/8	13/16	3-15/16	1.976	1/2	UE208-24	LP208	5.18	
1-11/16	UELP209-27	153.40	2-1/16	7-3/4	5-1/2	6-1/2	2-1/8	19/32	1	13/16	4-3/16	1.976	1/2	UE209-27	LP209	5.68	
1-3/4	UELP209-28													UE209-28			
1-15/16	UELP210-31	172.50	2-3/16	8-3/8	6	7	2-1/4	19/32	1	7/8	4-7/16	2.071	1/2	UE210-31	LP210	7.01	
2	UELP210-32													UE210-32			
2	UELP211-32	200.70	2-7/16	9-1/4	6-5/8	7-5/8	2-1/2	3/4	1-1/8	1	4-15/16	2.228	5/8	UE211-32	LP211	9.68	
2-3/16	UELP211-35													UE211-35			
2-7/16	UELP212-39	239.60	2-11/16	9-3/4	7-1/8	8-1/8	2-3/4	3/4	1-1/8	1-1/8	5-7/16	2.622	5/8	UE212-39	LP212	13.02	
Dimensions (mm)																	
20	UELP204	73.00	31.8	133	89	108	32	12	19	13	65	33.0	M10	UE204	LP204	1.64	
25	UELP205	76.40	33.3	140	95	114	38	12	19	16	68	35.4	M10	UE205	LP205	1.96	
30	UELP206	101.30	39.7	165	114	133	41	15	22	17	81	39.8	M12	UE206	LP206	2.86	
35	UELP207	129.30	46.0	178	127	146	48	15	22	19	94	43.9	M12	UE207	LP207	4.52	
40	UELP208	137.40	49.2	184	133	152	51	15	22	21	100	50.2	M12	UE208	LP208	5.18	
45	UELP209	157.60	52.4	197	140	165	54	15	25	21	106	50.2	M12	UE209	LP209	5.68	
50	UELP210	176.50	55.6	213	152	178	57	15	25	22	113	52.6	M12	UE210	LP210	7.01	
55	UELP211	221.90	61.9	235	168	194	64	19	29	25	125	56.6	M16	UE211	LP211	9.68	
60	UELP212	248.00	68.3	248	181	206	70	19	29	29	138	66.6	M16	UE212	LP212	13.02	

Lubrication fitting tap size for 1" and smaller shaft sizes, 1/4-28 UNF; for all other sizes, 1/8-27 NPT

INTERCHANGES: VPLB-2 P2B-DBL KCL-45 NPL-T